

# Connecting to Cat5 via X2Go from Windows

Before connecting to Cat5 the first time, please follow the “First Time Only” steps below.

## Connecting to Cat5

1. From the Start menu, run the “X2Go Client” (in the “X2Go Client for Windows” folder).
2. Click on the white box on the right that says “cat5.”
3. Enter your Cat5 password as prompted and click OK.
4. The **first time** you connect, it will ask if you trust the host key. To verify the secure connection, check that the provided “hash” *exactly* matches one of these lines:
  - 5e:c1:1a:7a:3d:07:72:64:d3:fc:fe:0a:cc:c5:0f:c8:d1:92:aa:0a
  - 55:87:cd:ef:80:dc:9d:e8:1d:14:87:27:40:00:01:4a

If it matches one of those, then click “Yes” to connect. If it doesn't match either of them, then please check [Cat5 Host Key Fingerprints](#) on the DES website for more possible hash values.

**Do not accept an unverified host key!**

## Disconnecting from Cat5

1. To properly close your session, click on the “System” menu (within the Cat5 desktop) and then click “Log out <user name>...”
2. If you just close the window, it will pause your session. You *should* be able to reconnect later to resume where you left off, but sometimes this might not work. To be safe, follow step 1.

---

## First Time Only Steps

### Install X2Go (not required on ICL computers)

1. Go to this page in your web browser: <http://wiki.x2go.org/>
2. Look for the green box at the top of the page that says “Get X2Go”. Find the second line in the box which says “Download X2Go Client”. Click on the “Windows installer” link on that line.



**Get X2Go**

- [Installing X2Go \(client/server\)](#)
- [Download X2Go Client \(Windows installer \(XP and Later\), OS X 10.6 and higher DMG or OS X 10.9 and higher DMG\)](#)
- [Download X2Go Client nightly builds \(untested, dependencies possibly older\) \(OS X\)](#)
- [Download PyHoca-GUI \(Windows installer \(XP and Later\)\)](#)

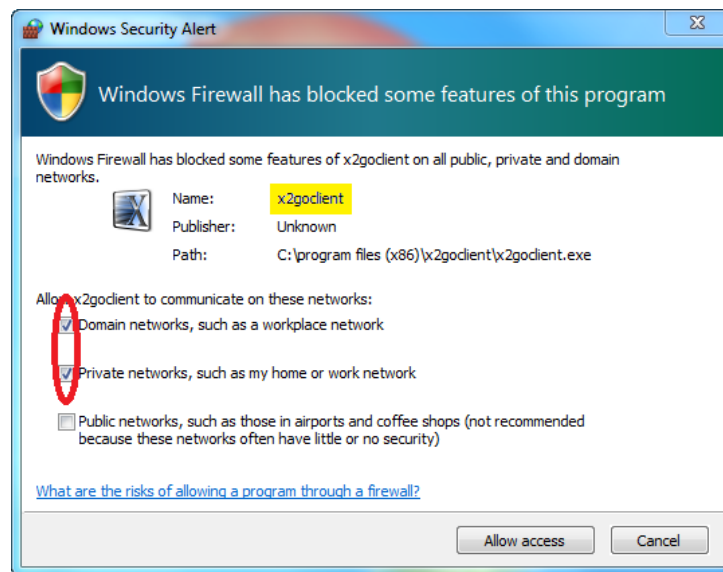
3. If asked, save the file to your Desktop.
4. Run the saved file to start the installer.
  - a. Read and agree to the license agreement.
  - b. Click the checkbox next to “Fonts” to make it green instead of gray; then click “Next”.
  - c. Click “Next” to accept the destination folder.
  - d. Click Install to begin the installation.
  - e. After installation is complete, click Finish.

## Setup the Session for Cat5

1. From the Start menu, run the “X2Go Client” (in the “X2Go Client for Windows” folder).
2. Since you have not created a session yet, you should be presented with the “Session preferences” dialog window. If not, type Control-N to bring up the window.
3. In the “Session” tab:
  - a. Next to “Session name” type “cat5” (without the quotes).
  - b. Under “Server”, next to “Host”, type “cat5.envsci.rutgers.edu” (without the quotes).
  - c. Under “Server”, next to “Login”, type your user name on Cat5 (For students, this is usually your Rutgers NetID).
  - d. For “Session type”, choose “MATE”.
4. In the “Connection” tab, set the “Connection speed” slider to “WAN”.
5. In the “input/Output” tab, under “Display”, you may optionally choose your initial screen size. (The size of the window can be adjusted later as needed.) For some PCs with older graphics cards, if X2Go has problems, try setting this to “Fullscreen”.
6. In the “Media” tab, uncheck “Enable sound support”.
7. Leave “Shared folders” tab alone.
8. Click the “OK” button to save the settings.

## Windows Firewall

The first time you run X2Go and/or connect to Cat5, Windows Firewall may ask you if various parts of X2Go should be allowed access to the network.



If “Name:” says “x2godclient” or “VcXsrv windows xserver”, check both “Domain networks” and “Private networks”, then click “Allow access”. For other names, uncheck all three boxes and click “Cancel”.